

JUNIOR 640

RADIAL ARM SAW



DESIGN FEATURES

SMALL FOOTPRINT

Designed with a small footprint, making it an ideal choice for workshops with limited space. Despite its compact size, it doesn't compromise on functionality or performance.

EASY TO USE

Ensuring even those with minimal experience can operate it effectively. Its intuitive controls and straightforward setup make it easy to use, allowing for quick adjustments and precise cuts.

AUTOMATIC RETURN-SPRING

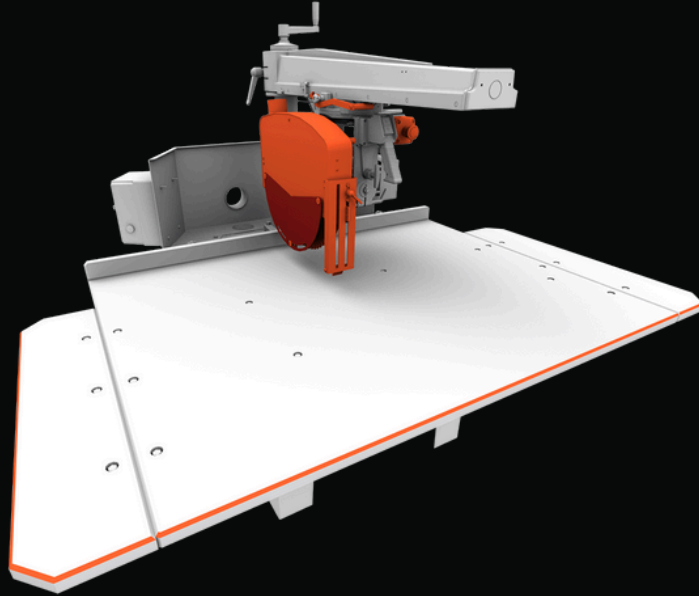
The cutting unit moves manually along the arm on guides and ball bearings, with a return spring aid and a mechanical locking system at 45° left.

READY TO BE CONNECTED TO A DUST COLLECTOR

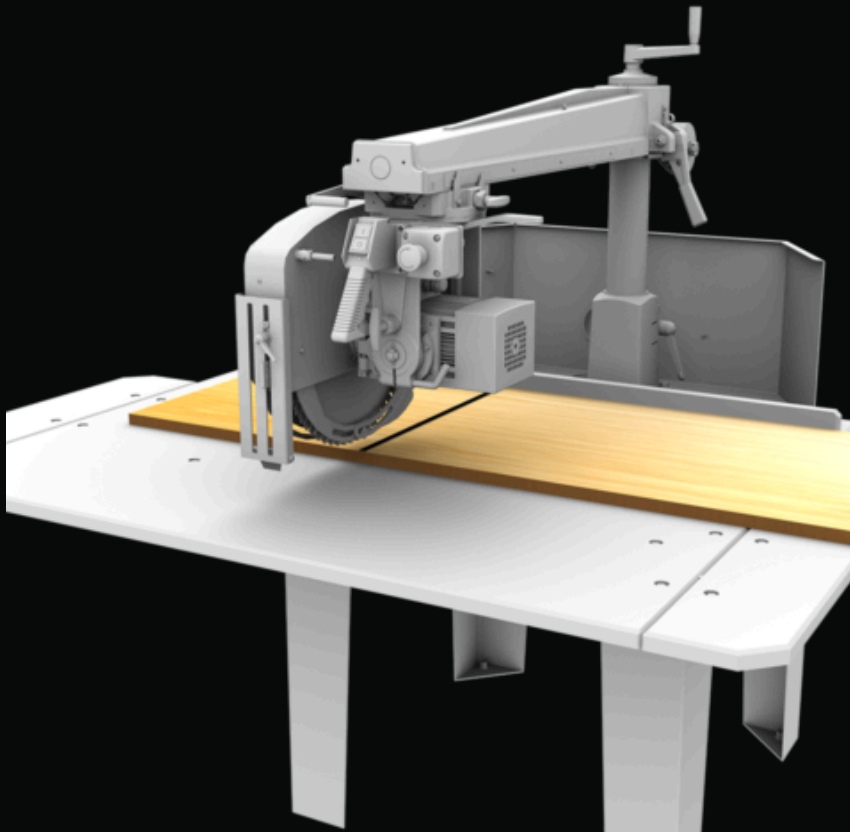
Comes equipped with a feature that allows it to be seamlessly connected to a dust collector. This integration is crucial for maintaining a clean and safe working environment, as it effectively captures and removes the dust generated during cutting operations.

MASTERWOOD

FEATURES

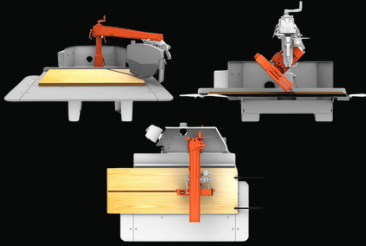


The RADIAL ARM SAWS JUNIOR 640 by Maggi Technology is a versatile and precise cutting machine designed for woodworking tasks¹. It features a manual radial-arm design, allowing for straight (90°) crosscuts, miter cuts (45° left and right), and bevel cuts (45° left and right)². This saw is ideal for furniture manufacturing and joinery, offering a small footprint suitable for small workshops.



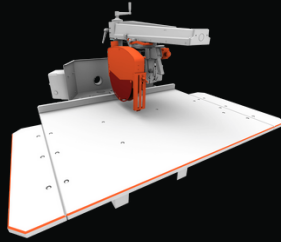
MASTERWOOD

FEATURES



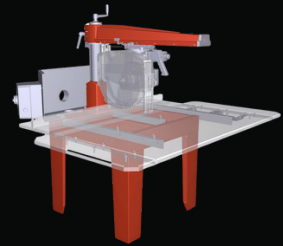
Versatile

Swivelling arm up to 45° left and right and left tilting cutting-head (stop and lock at 45°) allow many different cutting operations for the greatest versatility. The cuttinghead can also turn by 90° for accurate ripping.



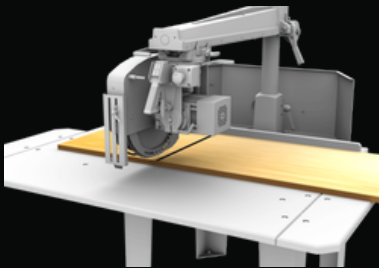
Safe

Sound-insulated, full-cover blade guard with safety microswitch, anti kickback, well-dimensioned working bench, emergency button and push-sticks definitively contribute to the operator safety during the cutting process.



Solid And Accurate

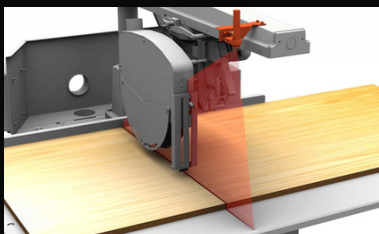
Rugged steel construction, arm and base made of cast iron. Interchangeable, tempered-steel made guides. Cutting head sliding on 8 ball bearings for a smooth, precise and effortless carriage movement.



The Most Popular

Cutting width up to 545 mm. All around performance. Well-suited also for the hobbyist.

OPTIONAL ACCESSORIES



Laser Guide

The laser displays the line to be cut on the panel for a more accurate cutting process.



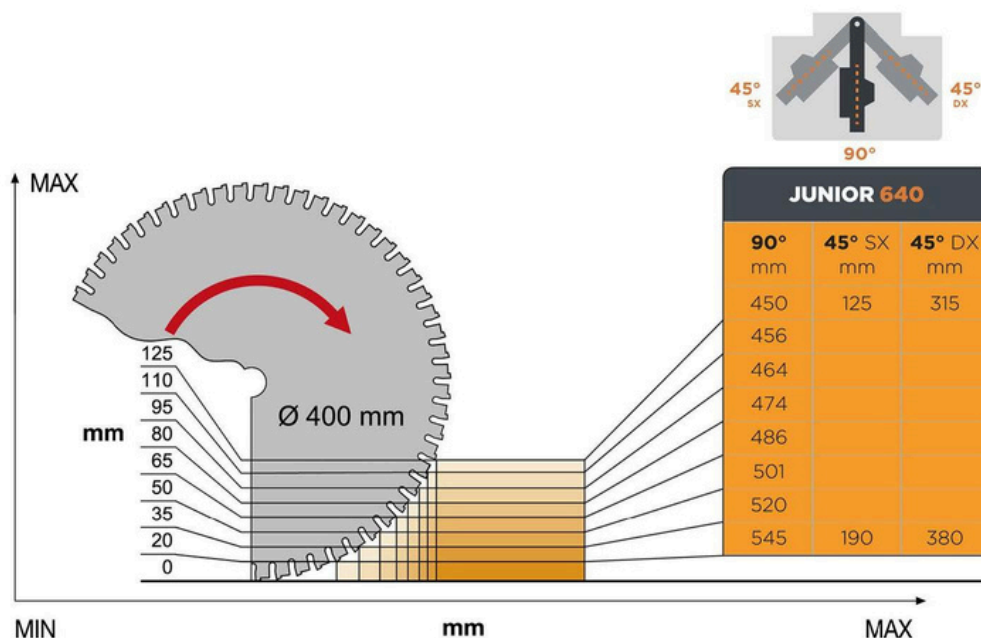
Independent idle roller table

To make the handling of large-size panels easier for the operator
Independent idle-roller table
500x1500 mm.

TECHNICAL SPECIFICATIONS

Max. cutting height	125 mm
Max. cutting width	545 x 20 h mm
Min. cutting width	450 x 125 h mm
Max. length of workpiece	infinito
Max. cutting width for ripping	0 - 860 mm
Cutting height at 45 °	0 - 80 mm
Min. and Max. cutting width at 45° (right)	315 - 380 mm
Min. and Max. cutting width at 45° (left)	125 - 190 mm
Height of blade from working bench	0 - 45 mm
Blade diameter	400 mm
Blade bore diameter	30 mm
Motor	HP / KW 4/3 RPM 2800
Working bench dimensions	1690 x 1155 mm
Diameter of dust collection nozzle on blade guard	60 mm
Diameter of dust collection nozzle on rear hood	100 mm (n.2)
Overall dimensions of full-assembled machine and net weight	1690 x 1560 x h 1580 mm / 220 Kg
Dimensions of packed machine and gross weight	1420 x 850 x h 750 mm - 232 Kg
Dimensions and gross weight - HALF ASSEMBLED MACHINE	1380 X 920 X h 960 mm - 246 Kg

TECHNICAL DRAWING



We Know That Support Is Important To You

Buying a new machine is a big commitment for anyone and continued support throughout the life of that machine is vital.

Being a local company, Farnese carry a vast array of parts locally to ensure that your machine always has the spares it needs. Enjoy peace of mind knowing that you'll be fully supported by Farnese and we'll always have you covered.

Farnese customers don't need to experience unnecessary machinery downtime waiting for remote assistance from other countries, as all the support and remote assistance is provided locally from our own qualified Technicians.

Our mission here at Farnese is to give you the best support in the industry. As we grow, we continue to recruit more and more qualified technicians to further strengthen our position in the Stone Industry.

