

# MAGGI

## BORING SYSTEM 46



### DESIGN FEATURES

#### QUICK SET UP

Boring depth and distance between the heads are easily adjustable with numeric counters.

#### HIGH PRODUCTIVITY

Having a total interaxes of 704 mm and with two boring-heads, the machine can perform a double row of parallel line holes in just one working cycle, and process a 3000 mm long side-panel in just four working cycles.

#### QUICK-CHANGE SPINDLES

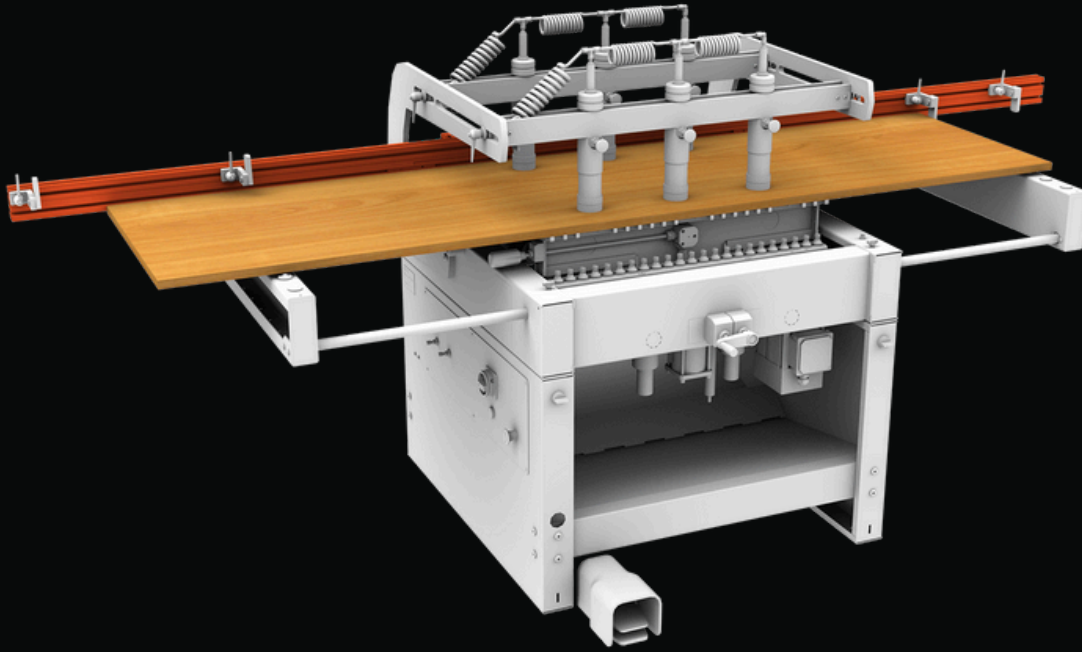
Enhance efficiency and reduce downtime.

#### EFFECTIVE PANEL HOLD-DOWN

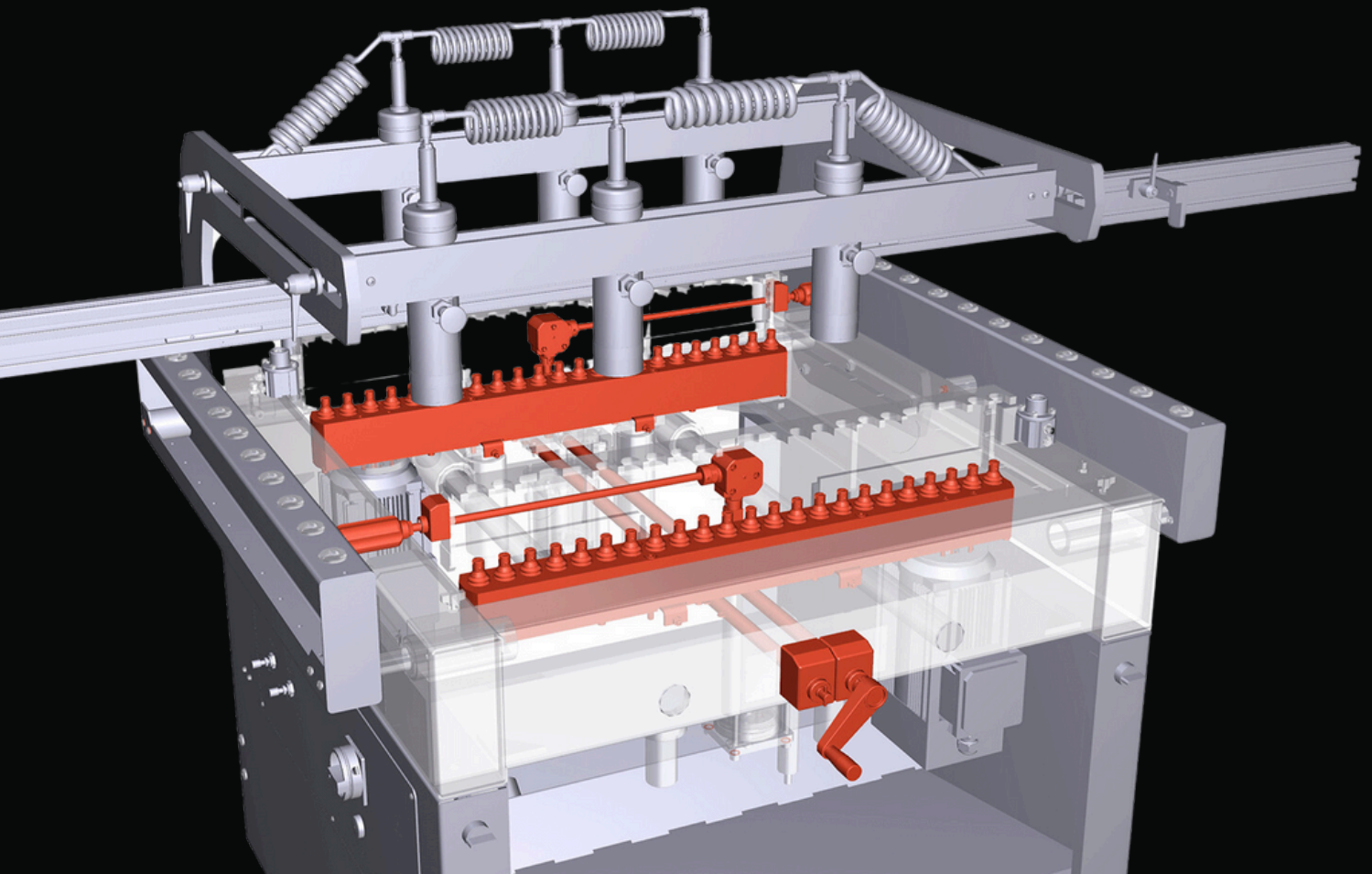
Six quick-adjustable, pneumatic safety clamps ensure accurate drilling operations

MASTERWOOD

# FEATURES



The BORING SYSTEM 46 by Maggi Technology is a semi-automatic, multispindle boring machine designed for high productivity in woodworking. It features two parallel vertical boring heads, each with 23 spindles, allowing for vertical double-row line drilling on furniture sides. This system is ideal for bookcase, bookshelf, and wardrobe manufacturers.



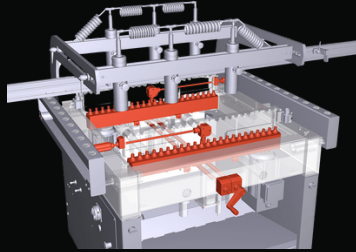
MASTERWOOD

# FEATURES



## High Productivity

Having a total interaxes of 704 mm and with two boring-heads, the machine can perform a double row of parallel line holes in just one working cycle, and process a 3000 mm long side-panel in just four working cycles.



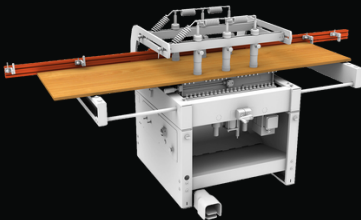
## Quick Set Up

Boring depth and distance between the heads are easily adjustable with numeric counters.



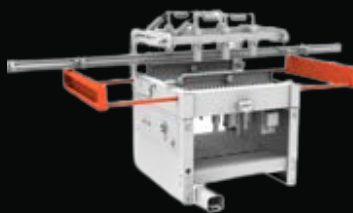
## Effective Panel Hold-Down And Drilling Accuracy

N. 6 quick-adjustable, pneumatic, safety clamps ensure the perfect panel hold-down, which results into always accurate drilling operations.



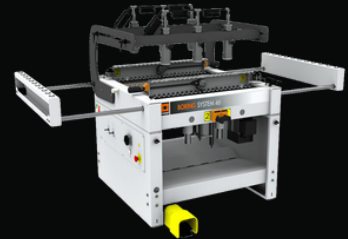
## Quick And Accurate Panel Positioning

Thanks to the aluminum fence (3000 x 80 mm) with 4 reference stops.



## Comfort

Wide and solid, extendable, panel holders, both sides, giving additional support to the long working panels and easing their loading on the machine.



## Fast And Effective

It considerably speeds up the vertical row drilling operations with respect to a single-head boring machine.

# TECHNICAL SPECIFICATIONS

Spindles	N 23 + 23
Left and right spindles on each head	N. 11 left - N. 12 right
Spindle interaxis	32 mm
Total interaxis	704 mm
Distance between rear head ( head n°1) and rear fence	Min 15 mm - max 494 mm
Distance between front head ( head n°2) and rear fence	Min 160 mm - max 639 mm
Max. tool diameter	40 mm
Max. boring depth	55 mm
Height of the working table	875 mm
Max. panel thickness	50 mm
Max. panel dimensions	700 x 3000mm
N. 2 motors	HP 2 / KW 1,5 - RPM 2800
Standard pneumatic pressure	BAR 6/ 8
Air consumption	NL 20 / cycle
Dust-collection hood diam.	80 mm
Overall dimensions	"1150 x 1130 x 1290 mm
	2180 x 1130 x 1290 mm
	incl. extendable side roller tables
Net weight	370 kg
Package dimensions ( machine)	1070 x 1220 x 1120mm
Fence package dimensions	1000 x 80 x 40 mm (each fence)
	packed in two separate cartons and
	inside the wooden crate
Total gross weight	410 KG

## **We Know That Support Is Important To You**

Buying a new machine is a big commitment for anyone and continued support throughout the life of that machine is vital.

Being a local company, Farnese carry a vast array of parts locally to ensure that your machine always has the spares it needs. Enjoy peace of mind knowing that you'll be fully supported by Farnese and we'll always have you covered.

Farnese customers don't need to experience unnecessary machinery downtime waiting for remote assistance from other countries, as all the support and remote assistance is provided locally from our own qualified Technicians.

Our mission here at Farnese is to give you the best support in the industry. As we grow, we continue to recruit more and more qualified technicians to further strengthen our position in the Stone Industry.

